

# EM2030 Sound Level Monitor

## Simplicity and precision



Automated operation and simple online analysis

Continuous remote monitoring with no manual interaction



Extended measurement range with remote controlled setup

Reliable measurement for any application



Frequency analysis tools for detailed sound source investigation

1/1 and 1/3 octave analysis options



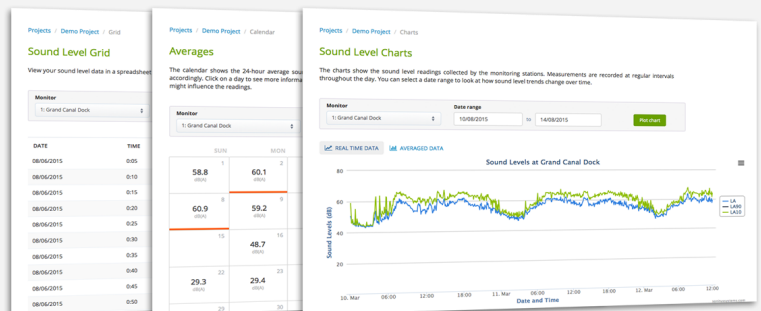
Flexible and automated audio sample recording options

Remotely capture audio clips to identify noise sources



Low power mode to extend battery life

Ready for long term remote measurement projects



HOSKIN SCIENTIFIC LTD

[www.hoskin.ca](http://www.hoskin.ca)

Vancouver | Burlington | Montreal

(604) 872-8651

(905) 333-5510

(514) 735-5267



## TECHNICAL SPECIFICATIONS

### SOUND LEVEL MEASUREMENT

**Accuracy:** IEC 61672 Class 1

**Dynamic range:** 17 to 121dB(A)

**Frequency range:** 20Hz to 20kHz

**Frequency weighting:** A and C weighting

**Parameters:** LEQ, L05, L10, L50, L90, L95, LMAX

### LOGGING

**Measurement period:** 1, 5, 10, 15 or 30 minutes

**Data storage capacity:** 5 years (5 minute logging)

**Procedure:** Automatic measurement and logging

### INTERFACE

The EM2030 and online interface are accessed using any standard web browser

### POWER REQUIREMENTS

**Power input:** 110V-240V AC

**EM2030:** 8 - 16V DC (battery option)

**Power consumption:** 2.4W

### COMMUNICATONS

Wi-Fi (user interface)

3G SIM card supplied with each monitor

### MICROPHONE

**Sensitivity:** 50mV/Pa

**Connection:** BNC to BNC (3m cable as standard)

**Power supply:** Constant current ICP, 18V 4mA



**SONITUS**  
SYSTEMS



**HOSKIN SCIENTIFIC LTD**

[www.hoskin.ca](http://www.hoskin.ca)

**Vancouver | Burlington | Montreal**

(604) 872-8651

(905) 333-5510

(514) 735-5267