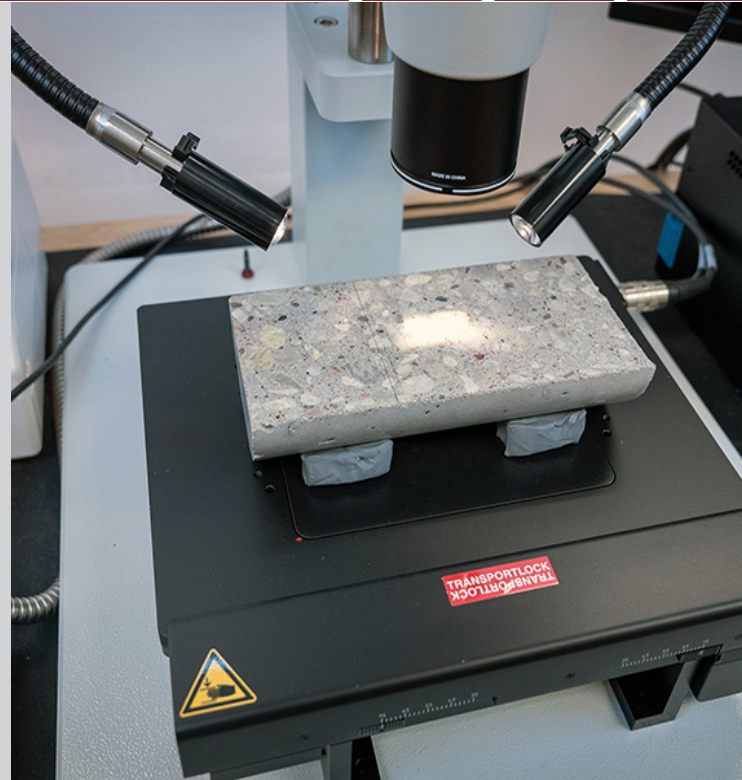


Notable Features:

- The system is Manual/ Motorized
- The stage is motorized and allows for programming a routine for Air Void Analysis in Concrete (time saving)
- The counting of voids, aggregate, paste etc, is entered manually into an external programmed keypad.
- Results are tabulated and entered into an Excel spreadsheet as outlined by MTO.
- The microscope system, and magnification requirements are also in line with ASTM standards for coarse and fine aggregate evaluation (manual)
- Optical (eyepiece, view) and video system viewing
- Support/expertise, and on site training from Hoskin Scientific
- Service/calibration from factory trained Hoskin Scientific Service Technicians



Analyzing the air void content and distribution in hardened concrete is a key component when evaluating the susceptibility of concrete during freezing and thawing cycles.

The HS-800 Air Voids Analysis System is used to facilitate the counting of microscopic air void content, frequency, spacing factor and paste-air ratio in concrete.

ASTM C457 describes sample preparation equipment for grinding and polishing a plane section of concrete prior to measuring the air void distribution with the use of a microscope. Hoskin Scientific can provide you with a complete turn key system which include all necessary items to perform the air-void determination of concrete. Please contact us for full details.

HOSKIN SCIENTIFIC AIR VOID ANALYSIS SYSTEM COMPLIANT TO ASTM C457

OPTICAL CONFIGURATION:
Nikon Zoom Stereo Model SMZ 800N

Zoom Ratio	8:1
Zoom Range	1-8X
Total Optical Magnification	5-480X Depending on Eyepieces and Objectives Used
Objective	1X Plan Achromat
Eyepieces	15X16 Widefield Eyepieces
Eyepiece Tube	Binocular Eyepiece

HARDWARE CONFIGURATION:

Marzhauser Motorized Stage, Scan plus 150MM X 150 MM
Dual Gooseneck Fibre Optic Illumination
8 Point, Segmented LED Ring Illumination
Coarse/Fine Focus Drive, Mechanism

VIDEO CONFIGURATION:

Nikon Video/Photo Port	50/50 Video Split, 100% Eyepiece View
C Mount	0.55X C Mount Video Adapter
Camera	Clemex Camera L 2.1 MP, (1600x1200), Colour, CCD, USB2
Objective	1X Plan Achromat
Software	Clemex Vision Lite Software for Image Analysis *
	* with Excel spreadsheet for Air Void Analysis C457 data collection

