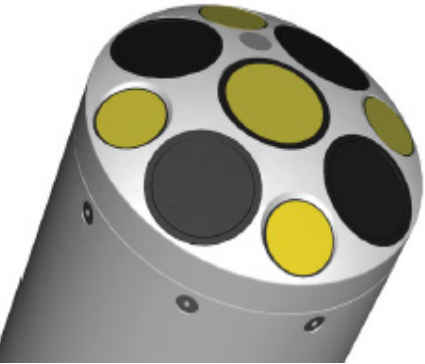


# TORRENT BOARD V7

HIGH SPEED, LOW DRAG AD(C)P SURFBOARD  
FOR SONTEK S5/M9 RIVERSURVEYOR SYSTEMS



The Torrent Board was developed by Xylem in conjunction with a team of SonTek RiverSurveyor M9 and S5 users, consisting of hydrologists and surfboard designers. The Torrent Board has been designed for use across the velocity ranges including high velocity conditions.

The low drag, deep V keel and double concave of the board enables any entrapped air to pass either side of the instrument minimising aeration.

The Torrent Board has been successfully deployed in the field, in velocities up to 4m/s and yet still performs in really low velocities. It also comes with a drag anchor to assist manoeuvring in difficult low velocity and eddy situations.

The Torrent Board is supplied with all fixings and a handy soft case with rucksack-style straps to easily transport the board and RiverSurveyor system across rough terrain with ease.

- Designed with High Velocity conditions in mind
- Low drag, deep V keel and double concave
- Drag anchor to assist in low velocity
- Supplied with all fixings & carry case
- Can be transformed into a remote boat with the addition of rQPOD

**With the addition of rQPOD (sold separately) the Torrent Board can be transformed into a remote boat for measurements and collection of data with no strings attached!**

# TORRENT BOARD V7

HIGH SPEED, LOW DRAG AD(C)P SURFBOARD  
FOR SONTEK S5/M9 RIVERSURVEYOR SYSTEMS

## Torrent Board: High Speed, low drag AD(C)P surfboard for SonTek S5/M9 RiverSurveyor systems



Specifications	Standard	Mini
----------------	----------	------

**Dimensions**

Length	1.05m	0.80m
Width	0.65m	0.50m
Nose rocker	0.25m	0.15m
Weight incl. M9	9.8kgs	8.2kgs
Weight excl. M9	4.7kgs	3.1kgs

**Construction**

Glass Fibre on Basalt laminate foam core	•	•
EVA Deck material on top	•	•
HD EVA side reinforcements	•	•
Stainless steel fixings	•	•
FCS Fin system	•	•
Drag anchor / sock for slow flows	•	•
Water velocities up to 5m/s**	•	
Water velocities up to 2m/s**		•

**Transportation**

Soft carry case with rucksack-style straps & storage pockets included	•	•
---	---	---

**Options**

Modular design can be used to create rQPOD remote boat.



## Suitable For A Variety Of Water Conditions

### High Velocity & Turbulent Water

The board is suitable for many river condition's from very low flows using the supplied drag anchor to high velocities up to 4m/s suspended from a cable-way, tethered from the banks or from a bridge.

### Tethered, Low Velocity and Cableway

Multiple attachment points are built into the board to allow the user to adapt it for the water surface conditions depending on the surface water velocity.

### Key Features

- Extremely portable
- 4m/s Max speed
- Standard or Mini sizes
- Durable
- Suitable for many applications
- Lightweight