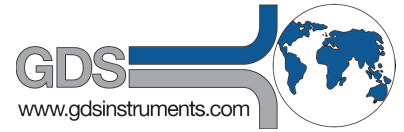




HOSKIN

SCIENTIFIC

GDS 2023
LABORATORY SYSTEMS
FOR SOIL & ROCK



hoskin.ca

Supplying Testing & Monitoring Instruments Since 1946

For over seventy years, Hoskin Scientific has been a supplier of testing and monitoring instrumentation to the Canadian market. With offices in Vancouver, Edmonton, Oakville and Montréal our customers are able to receive local sales and technical support in our three major departments.

Our Environmental Department provides solutions for monitoring and sampling biological and chemical parameters in the environment. Our team of environmental sales representatives and diverse product range guarantee that you will find the right products for your application. Specific areas include: water quality, water quantity, soil moisture, plant science, weather stations, indoor air quality, aquatic sampling, and oceanography.

Our Materials Testing Department offers testing equipment for soil, asphalt, petroleum, concrete and cement. Our qualified sales associates focus on providing a sophisticated range of testing equipment complying with the various test methods, ensuring that accurate and consistent test results are always obtained.

Our Instrumentation Department focuses on a wide range of products including optical camera systems, transducers and transmitters, data acquisitions and loggers, signal conditioners and indicators, automation sensors and measurement systems. We have technical sales associates that are trained in various areas and willing to help you with your instrumentation requirements.

RENTALS

We offer high quality, proven equipment that will provide the user with valuable data as well as numerous ways of retrieving, filtering and viewing that data. We carry a wide range of instrumentation, including: water quality, portable gas monitors, soil sampling instruments and more.

Rental Equipment:

- Single and multi-parameter instruments that can be setup for spot checks or extended deployment/data logging
- Water sampling instruments
- Water velocity and stream profiling instruments
- Soil sampling instruments
- Soil vapour sampling instruments
- Portable gas monitoring instruments

Customer satisfaction is our goal and we make an effort to ensure that all our customers are satisfied with their rental. All rental instruments are cleaned and calibrated before being sent to the user (please note that we also require equipment to be returned clean). If a rental instrument requires recalibration, please return the instrument to us and we will recalibrate at no charge. Any instrument not functioning properly can be exchanged at no cost.

Hoskin Scientific offers technical support over the phone and can also provide hands on demonstrations.

We are constantly expanding and looking for new equipment to add to the rental inventory and welcome all suggestions.

Check our website www.hoskin.ca for current offerings.

Daily, weekly and monthly rental rates available – please call for a quote.

WHY GDS.....4

STATIC TRIAXIAL TESTING6

DYNAMIC TRIAXIAL TESTING.....8

SHEAR SYSTEMS.....10

DIRECT & ROTATIONAL SHEAR.....12

CONSOLIDATION TESTING14

UNSATURATED SOIL TESTING.....15

TEMPERATURE CONTROL TESTING.....16

RESONANT COLUMN TESTING.....18

HOLLOW CYLINDER TESTING.....19

ROCK SYSTEMS.....20

PRESSURE/VOLUME CONTROLLERS22

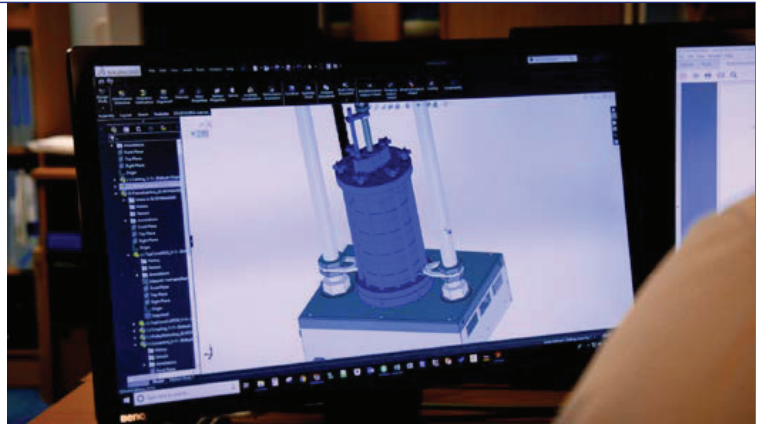
TRANSDUCERS & LOAD CELLS23

GDSLAB: THE ULTIMATE IN FLEXIBILITY24

Product Design & Development

All GDS apparatus is designed by our in-house team of design engineers who together form our engineering department. This team is responsible for the mechanical components, software, firmware, control & acquisition systems and new product development.

Having the capabilities to design all aspects of the apparatus and software, allows GDS to be responsive to customer & market needs whilst maintaining complete autonomy. GDS have utilised these competences whilst working with Fugro on systems specifications and upgrades options featured in this brochure.



Manufacturing & Quality Assurance

GDS build all their apparatus at their factory in Hook, Hampshire. Components are sourced from local suppliers to ensure quality can be monitored. GDS are ISO9001:2015 compliant, meaning their management system, manufacturing process, services and documentation procedures meet the requirements of an international standard.

Prior to delivery, all apparatus undertakes comprehensive quality assurance checks by one of our geotechnical system engineers.



Installations

Where installations are required, all are carried out by GDS engineers. The installation dates are generally booked at a convenient time with the customers once shipping dates have been confirmed.



Product Training

GDS can carry out comprehensive on-site product training if required. Usually the same engineer who completes QA of the apparatus before shipping is deployed to carry out the training. This means they are familiar with any upgrades or modifications made to the system prior to arrival.



Post Sales Support

GDS understand the need for ongoing after sales support, so much so that they have their own dedicated customer support centre. Alongside their support centre GDS use a variety of additional support methods including remote PC support, product helpsheets, video tutorials, email and telephone support.



Extended 1, 2, 3 Year Warranties

All GDS apparatus is covered by a 12 month manufacturers warranty. In addition to the standard warranty, GDS offer comprehensive extended warranties for 12, 24 and 36 months, for peace of mind against any repairs in the future. The extended warranties can be purchased at any time during the first 12 months of ownership.



TRIAxIAL TESTING SYSTEM



TECHNICAL SPECIFICATION:	OPTIONS:
Load Range / Sample Size (Diameter):	7kN / 38 or 50mm 25kN / 70 or 100mm
Cell Pressure Range:	2MPa
Optional Extras:	
Vertical Bender Elements	50, 70, 100mm
Horizontal Bender Elements	50, 70mm
LVDT Local Strain Transducers	50, 70mm
Hall Effect Local Strain Transducers	38, 50, 70mm
Unsaturated Testing	38, 50mm (HKUST Method)
Permeability Testing	Available

LOAD FRAMES



TECHNICAL SPECIFICATION:	OPTIONS:
Load Range:	10, 50, 64, 128, 256kN
Sample Size (Diameter):	38, 50, 54, 70, 76, 100, 150, 300mm
Optional Extras:	
Vertical Bender Elements	50, 70, 100, 150mm
Horizontal Bender Elements	50, 70, 100mm
LVDT Local Strain Transducers	50, 70, 100mm
Hall Effect Local Strain Transducers	38, 50, 70, 100mm
Unsaturated Testing	38, 50mm (HKUST Method)

TRIAxIAL AUTOMATED SYSTEM FEATURING GDSVIS LOAD FRAME



TECHNICAL SPECIFICATION:	OPTIONS:
Load Range:	250, 400kN
Sample Size (Diameter):	38, 50, 54, 70, 76, 100, 150, 300mm
Optional Extras:	
P-S Wave Measurement	Dependant on triaxial cell
LVDT Local Strain Transducers	50, 70, 100mm
Hall Effect Local Strain Transducers	38, 50, 70, 100, 150mm
Temperature Control	-20°C to +65°C -20°C to +80°C

PERMEABILITY SYSTEM



TECHNICAL SPECIFICATION:	OPTIONS:
Cell Pressure Range:	2MPa
Sample Size (Diameter):	38, 50, 70, 100mm

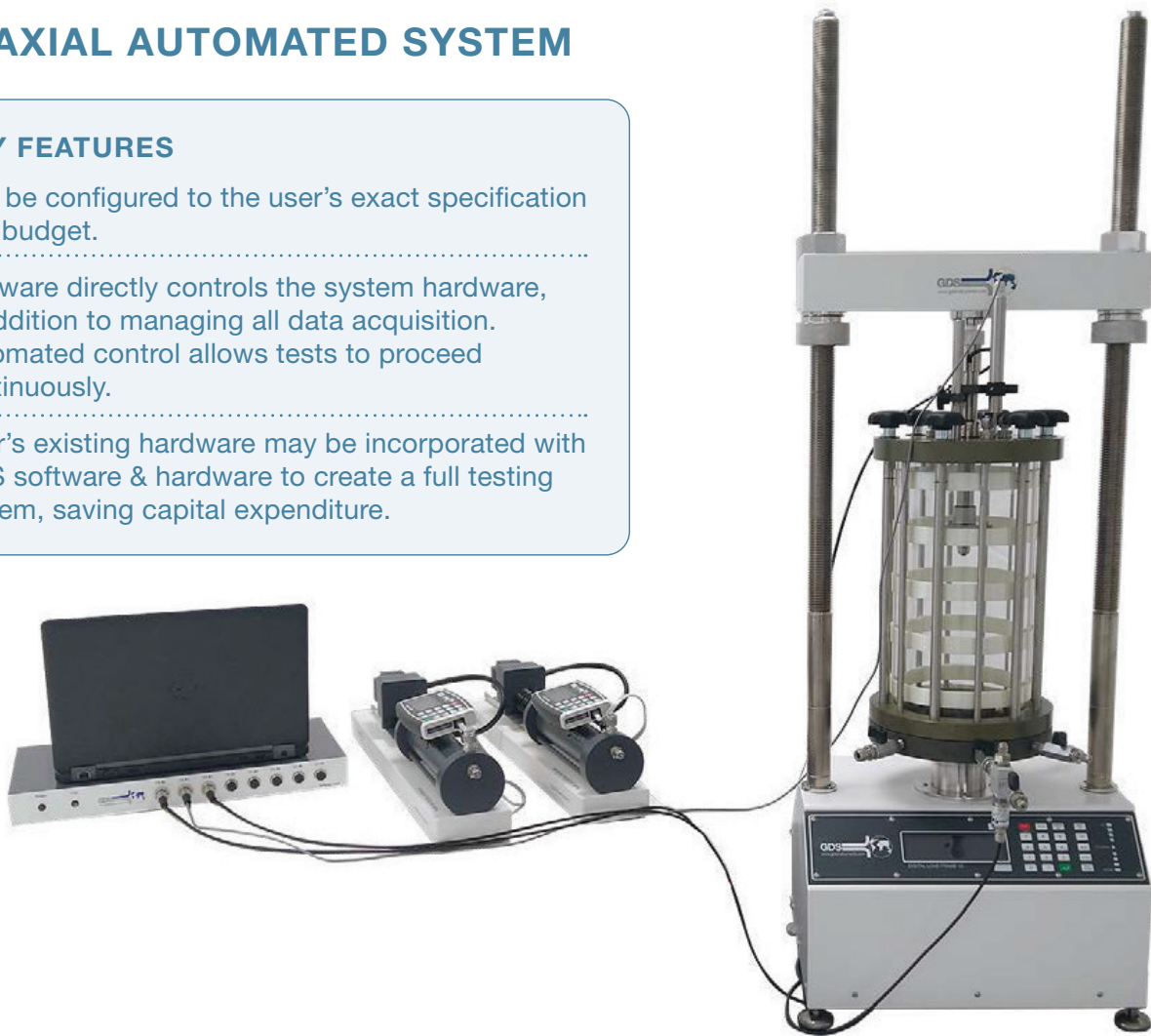
TRIAXIAL AUTOMATED SYSTEM

KEY FEATURES

Can be configured to the user's exact specification and budget.

Software directly controls the system hardware, in addition to managing all data acquisition. Automated control allows tests to proceed continuously.

User's existing hardware may be incorporated with GDS software & hardware to create a full testing system, saving capital expenditure.



TECHNICAL SPECIFICATION:	OPTIONS:
Load Frame:	50, 64kN
Cell Sizes:	76, 100, 150mm
Cell Pressure:	2MPa standard (alternatives available, dependant on triaxial cell chosen)
Top Caps and Base Pedestals:	50, 70, 100 or 150mm (dependant on triaxial cell)
Optional Extras:	
Alternative Load Cell	2, 4, 5, 10, 25, 38, 40, 50, 64kN
Vertical Bender Elements	50, 70, 100, 150mm
Horizontal Bender Elements	50, 70, 100mm
LVDT Local Strain Transducers	50, 70, 100mm
Hall Effect Local Strain Transducers	38, 50, 70, 100mm
Mid Plane Pore Pressure & Suction Probe	up to 100mm
Stainless Steel (Toxic / Marine)	50, 70, 100mm
Permeability Upgrade	Available
Lifting System	Available
Unsaturated Testing	Available
Dynamic Testing	Upgrade to Quasi-Dynamic Testing (0.1Hz)

GDS IS ONE OF THE MOST EXPERIENCED MANUFACTURERS OF DYNAMIC TRIAXIAL SYSTEMS IN THE WORLD, HAVING SUPPLIED MORE THAN 350 SYSTEMS TO COMMERCIAL AND RESEARCH LABORATORIES DURING THE LAST 35 YEARS.

ENTERPRISE LEVEL DYNAMIC TRIAXIAL TESTING SYSTEM



TECHNICAL SPECIFICATION:	OPTIONS:
Load Range:	5, 10kN
Operating Frequency:	5, 10Hz
Cell Pressure Range:	1MPa (Air)
Cell Size:	76, 100, 150mm
Sample Size (Diameter):	38, 50, 70, 100, 150mm
Optional Extras:	
Vertical Bender Elements	50, 70, 100, 150mm
Horizontal Bender Elements	50, 70, 100mm
LVDT Local Strain Transducers	50, 70, 100mm
Hall Effect Local Strain Transducers	38, 50, 70, 100mm
Unsaturated Testing	50, 70, 100mm
Permeability	Available

RESILIENT MODULUS TESTING SYSTEM



TECHNICAL SPECIFICATION:	OPTIONS:
Load Range:	5, 10kN
Operating Frequency:	10Hz
Cell Pressure Range:	1MPa
Sample Size (Diameter):	70, 71, 100, 150mm
Optional Extras:	
Vertical Bender Elements	50, 70, 100, 150mm
Horizontal Bender Elements	50, 70, 100mm
LVDT Local Strain Transducers	50, 70, 100mm
Unsaturated Testing	50, 70, 100mm

TRUE TRIAXIAL APPARATUS



TECHNICAL SPECIFICATION:	OPTIONS:
Load Range:	20kN
Operating Frequency:	5Hz
Cell Pressure Range:	1MPa
Data Acquisition:	24 Bit
Sample Size (Diameter):	75x75x150mm
Optional Extras:	
Unsaturated Testing	Available

ADVANCED DYNAMIC TRIAXIAL TESTING SYSTEM

KEY FEATURES

Adaptive Control Firmware for increased testing precision & user-defined loading waveforms to mimic specific conditions.

High accuracy electro-mechanical control allows the user to perform very small strain static tests through to large strain dynamic tests.

In-built balanced ram (for up to 5Hz systems) keeps cell pressure constant during cyclic loadings.

Sophisticated feedback control firmware and 5kHz data acquisition enables specimen response at high loading frequency to be captured.



TECHNICAL SPECIFICATION:

Operating Frequency:	5Hz	5Hz	5Hz	5Hz	5Hz
Load Range:	10kN	40kN	40kN	40kN	60kN
Cell Pressure Range:	2MPa	2MPa	2MPa	4MPa	1MPa
Sample Size (Diameter):	up to 100mm	up to 100mm	up to 150mm	up to 100mm	up to 300mm

Optional Extras:

Vertical Bender Elements	50, 70, 100, 150mm
Horizontal Bender Elements	50, 70, 100mm
LVDT Local Strain Transducers	50, 70, 100mm
Hall Effect Local Strain Transducers	38, 50, 70, 100mm
Mid Plane Pore Pressure & Suction Probe	50, 70, 100mm
Lifting Frame	Available
Unsaturated Testing	50, 70, 100mm
Temperature Control	-10°C to +60°C, -20°C to +65°C, -20°C to +85°C (For 5Hz / 40kN / 4MPa only)
Permeability	Available
Dynamic Cell Pressure Control	5Hz / 1MPa

SHEARBASE SYSTEM



TECHNICAL SPECIFICATION:	OPTIONS:
Load Range:	5, 10kN (both axes)
Max Speed:	0.25mm/s
Sample Size Simple Shear:	50, 63.5, 66, 70, 100mm
Sample Size Direct Shear:	60, 100mm Square 63.5mm Circular
Optional Extras:	
Vertical Bender Elements (Simple Shear)	50, 63.5, 66, 70, 100mm

CONFINED ELECTRO-MECHANICAL DYNAMIC CYCLIC SIMPLE SHEAR



TECHNICAL SPECIFICATION:	OPTIONS:
Load Range:	5kN (both axes)
Operating Frequency:	0 (static) to 5Hz
Sample Size (Diameter):	50, 63.5, 66, 70, 100mm
Optional Extras:	
Vertical Bender Elements	66mm

VARIABLE DIRECTION DYNAMIC CYCLIC SIMPLE SHEAR



TECHNICAL SPECIFICATION:	OPTIONS:
Load Range:	5kN Axial Axis, 2kN Shear Axis
Operating Frequency:	0 (static) to 1Hz
Sample Size (Diameter):	50, 70mm

CONFINED VARIABLE DIRECTION DYNAMIC CYCLIC SIMPLE SHEAR



TECHNICAL SPECIFICATION:	OPTIONS:
Load Range:	10kN Axial Axis, 5kN Shear Axis
Operating Frequency:	0 (static) to 1Hz
Sample Size (Diameter):	50, 100mm

ELECTROMECHANICAL DYNAMIC CYCLIC SIMPLE SHEAR DEVICE

KEY FEATURES

Electro-mechanical actuators for greater accuracy.

Passive / Active height control, means no intervention is required between stages.

Little or no effects of vertical compliance due to the extremely stiff system design.

Adaptive Control Firmware for increased testing precision and Constant Normal Stiffness testing included as standard.



TECHNICAL SPECIFICATION:	OPTIONS:
Load Ratings:	5, 10kN
Sample Sizes (Diameter):	50, 63.5, 66, 70, 100, 150mm
Frequency:	5Hz
Optional Extras:	
Vertical Bender Elements	50, 63.5, 66, 70, 100, 150mm
Local Horizontal LVDT Displacement Measurement	Available
Local Vertical LVDT Displacement Measurement	Available
Load Calibration Jig and Load Cell (5, 10kN)	Available
Direct Shear Sample	60mm Square, 63.5mm Circular
Water Reservoir to Aid Sample Saturation	Available

BACK PRESSURED SHEARBOX



TECHNICAL SPECIFICATION:	OPTIONS:
Load Range:	25kN Normal & Shear Force
Pressure Range:	2MPa
Sample Size:	50, 60, 100mm (Circular) 75 x 75 or 100 x 100mm (Square)
Optional Extras:	
Unsaturated Testing	Available

DYNAMIC BACK PRESSURED SHEARBOX



TECHNICAL SPECIFICATION:	OPTIONS:
Load Range:	25kN Axial 10kN Shear
Operating Frequency:	0 (static) to 5Hz
Pressure Range:	2MPa
Sample Size:	50/75/100mm square, 20mm height

LARGE AUTOMATED DIRECT SHEAR



TECHNICAL SPECIFICATION:	OPTIONS:
Load Range:	100kN Axial, 100kN Shear
Max Speed:	0.1mm/s
Sample Size:	300 x 300mm Square 300mm Circular
Optional Extras:	
Rock Sample Set	150mm Circular

RING SHEAR APPARATUS
5KN/200Nm



TECHNICAL SPECIFICATION:	OPTIONS:
Load Range:	5kN
Torque Range:	200Nm
Sample Size:	100mm OD x 70mm ID
Speed Range:	0.01° to 720°/min
Optional Extras:	
Interface Shear	Available

INTERFACE SHEAR TESTER 5kN/200Nm

KEY FEATURES

Infinitely rotating base platen to allow application of very large rotational deformations.

Low range load cell for accurate measurement of applied vertical load and torque.

Can be used for interface friction studies, for example between geomembranes, pipeline footings and natural materials.

Available in stainless steel for corrosive sample testing.

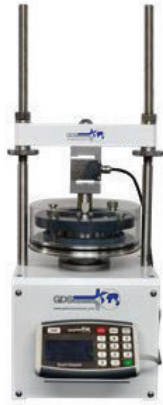
Small laboratory footprint.



TECHNICAL SPECIFICATION:	OPTIONS:
Load Range:	5kN
Torque Range:	200Nm
Pressure Range:	1MPa
Sample Size:	70 x 22mm
Speed Range:	0.01 ^o to 720 ^o /min
Optional Extras:	
Ring Shear	Available

ONE-DIMENSIONAL CONSOLIDATION TESTING APPARATUS, AS WELL AS MORE ADVANCED CONSOLIDATION SYSTEMS THAT CAN INCLUDE BACK PRESSURE CONTROL, HIGH CONSOLIDATION FORCES, UNSATURATED TESTING AND BENDER ELEMENTS.

AUTOMATIC OEDOMETER SYSTEM



TECHNICAL SPECIFICATION:	OPTIONS:
Load Range:	10kN (Using Standard load frame, horizontal daylight 184mm)
Sample Size (Diameter):	50, 63.5, 70, 100mm
Optional Extras:	
Wide Load Frame: (Horizontal daylight 224mm)	10kN

CONSTANT RATE OF STRAIN CONSOLIDATION CELL



TECHNICAL SPECIFICATION:	OPTIONS:
Load Range:	10kN (Wide load frame required) 50kN (Requires LF50 load frame)
Back Pressure Range:	1, 3, 20MPa
Sample Size:	50, 63.5, 70, 100mm x 22mm
Optional Extras:	
Unsaturated Testing	1MPa cell only
Temperature Control	20MPa cell only
Permeability	Available

ROWE & BARDEN CONSOLIDATION TESTING SYSTEM



TECHNICAL SPECIFICATION:	OPTIONS:
Stress Range:	3MPa
Sample Size (Diameter):	50, 63.5, 76.2, 100mm
Optional Extras:	
Permeability	Available
Unsaturated Testing	Available

GDS PROVIDES A NUMBER OF SOLUTIONS FOR THE TESTING OF UNSATURATED SOIL, THAT CAN BE SEEN AS OPTIONAL EXTRAS ON MANY SYSTEMS IN THE CATALOGUE. EACH IS BASED AROUND THE REQUIREMENT TO EITHER DEFINE, OR EXPLORE AREAS AROUND THE STRESS DEPENDENT SOIL WATER CHARACTERISTIC CURVE (SDSWCC) BY VARYING THE MATRIC SUCTION OF THE SOIL. THE MATRIC SUCTION IS THE PRINCIPAL VARIABLE IN DEFINING THE STATE OF STRESS IN AN UNSATURATED SOIL.

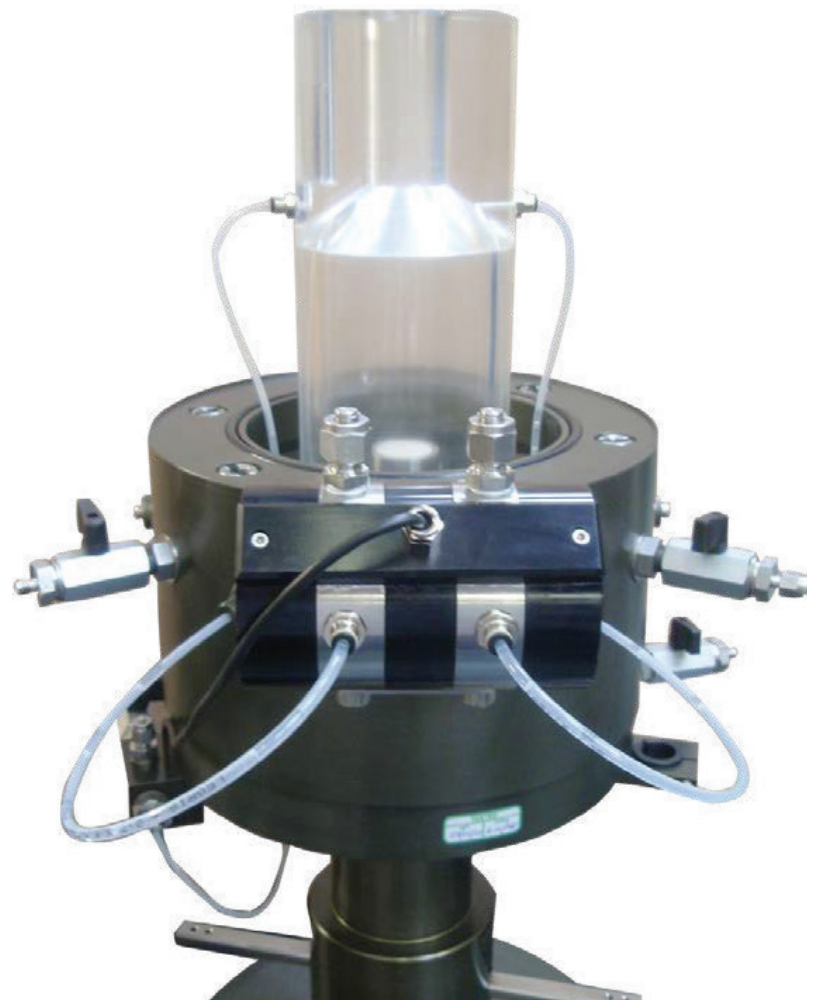
KEY FEATURES

Axis translation method used to control matric suction.

Various air entry values available for ceramic porous discs.

Options to upgrade consolidation, triaxial, direct shear and small-strain systems.

Unsaturated soil calculations automatically handled by GDSLAB.



OPTIONS:	DESCRIPTION:
Method A:	Direct volume measurement using an air pressure/volume controller
Method B:	HKUST inner cell (As shown above)
Method D:	On-sample strain transducers (Can be combined with method A)
Note: Please check system configuration.	

GDS OFFERS A RANGE OF TEMPERATURE CONTROL SYSTEMS TO ACCURATELY CONTROL THE TEMPERATURE OF SOIL AND ROCK SPECIMENS, FROM FROZEN CONDITIONS TO HEATED STATES.

ENVIRONMENTAL TRIAXIAL AUTOMATED SYSTEM



TECHNICAL SPECIFICATION:				
Pressure Range:	4MPa	20MPa	64MPa	70MPa
Cell Size:	150mm	100mm	100mm	70mm
Balanced Ram:	No	No	Yes	No
Heating Only: Ambient to 60°C Ambient to 100°C	Yes	Yes	Yes	Yes
Heating & Cooling: -20°C to +65°C -30°C to +85°C -30°C to +100°C	No	Yes	No	No
Load Frame:	100kN	50, 64, 128, 256kN	128, 256kN	1MN

BISHOP & WESLEY ENVIRONMENTAL TRIAXIAL TESTING SYSTEM



TECHNICAL SPECIFICATION:	OPTIONS:
Load Range:	100kN
Pressure Range:	10MPa
Sample Size (Diameter):	50mm
Temperature Range:	-20°C to +65°C
Optional Extras:	
LVDT	50mm
Cell Top Lifting Frame	Available
Also available without temperature options.	

CONSTANT RATE OF STRAIN CONSOLIDATION



TECHNICAL SPECIFICATION:	OPTIONS:
Load Range:	50, 64kN
Back Pressure Range:	20MPa
Sample Size:	50 x 20mm
Temperature Options:	
Heating Only:	Ambient 65°C or 100°C
Heating & Cooling:	-20°C to +65°C
Optional Extras:	
Sample Height	40mm

TEMPERATURE CONTROLLED HIGH PRESSURE SYSTEM SUITABLE FOR THE TRIAXIAL TESTING OF GAS HYDRATES

KEY FEATURES

Gas hydrates require high pressure and low temperature, from this respect this system is a standard GDS high load temperature controlled system.

Additional ports are available so that pore fluids such as methane can be introduced and controlled, as well as argon for flushing.

Computer controlled gaseous pressure controller used to control the relevant pore gases.

Available as a resonant column Gas Hydrate system.



TECHNICAL SPECIFICATION:	OPTIONS:
Load Range:	128, 256kN
Pressure Range:	20MPa
Sample Size (Diameter):	50, 70, 100mm
Temperature Range:	-20°C to +65°C
Gaseous Pressure Control:	20MPa
Optional Extras:	
Lifting Solution	Available

WE MANUFACTURE BOTH A STOKOE TYPE RCA (ISOTROPIC RESONANCE IN TORSION AND FLEXURE, DAMPING BY FREE VIBRATION, AND TORSIONAL SHEAR TESTING) AND A HARDIN TYPE RCA (ANISOTROPIC OR ISOTROPIC TORSIONAL RESONANCE). WE CONSIDER THE INDUSTRY STANDARD RCA AS THE STOKOE VERSION.

RESONANT COLUMN APPARATUS



TECHNICAL SPECIFICATION:	OPTIONS:
Cell Sizes:	73, 100mm
Pressure Range:	1, 2MPa
Sample Size (Diameter):	50, 70, 100mm
Lifting Frame:	As standard
Optional Extras:	
Vertical Bender Elements	50, 70mm
Torsional Shear (Slow speed torsional shear test) upgrade	Up to 1MPa only
Unsaturated Testing	50mm

A HARDIN TYPE IS CHOSEN SPECIFICALLY FOR ITS CAPABILITY TO PERFORM ANISOTROPIC TORSIONAL RESONANCE AS THIS IS NOT POSSIBLE IN THE STOKOE VERSION.

HARDIN OSCILLATOR



TECHNICAL SPECIFICATION:	OPTIONS:
Triaxial Cell:	100mm
Pressure Range:	1, 2MPa
Load Range:	2kN
Sample Size (Diameter):	50, 70, 100mm
Lifting Frame:	As standard
Optional Extras:	
Vertical Bender Elements	50, 70mm
Torsional Shear (Slow speed torsional shear test) upgrade	1MPa only

GDS SPECIALISES IN DESIGNING AND MANUFACTURING ADVANCED TESTING SYSTEMS FOR RESEARCH, WHICH INCLUDES A NUMBER OF HOLLOW CYLINDER APPARATUS CONFIGURATIONS.



KEY FEATURES

Combined internal submersible load cell measures vertical load and torque while eliminating error from confining pressure variation and ram friction.

Flexibility in system loading capacity, specimen size, and applied pressures ensures the system is configured to suit testing and budgetary requirements of the user.

Options available to include local displacement transducers for small strain measurement, and dynamic cell pressure/ volume controllers.

Can be used for triaxial tests.

TECHNICAL SPECIFICATION:

Operating Frequency:	2Hz	5Hz	5Hz
Load Range:	10kN	10kN	10kN
Axial/Torque Force Range:	100Nm	100Nm	200Nm
Pressure Range:	2MPa	2MPa	2MPa
Sample Size:	100mm OD/ 60mm ID	100mm OD/ 60mm ID	100mm OD/ 60mm ID
Lifting Frame:	As standard	As standard	As standard

Optional Extras:

Unsaturated Testing	Available
Triaxial Sample Upgrade	50, 70mm

GDS HAS MANUFACTURED HIGH PRESSURE AUTOMATED TRIAXIAL TESTING SYSTEMS FOR ROCK FOR OVER 25 YEARS, WITH SYSTEMS INSTALLED AT LEADING RESEARCH AND COMMERCIAL INSTITUTES AROUND THE WORLD.

1MN STATIC TRIAXIAL ROCK TESTING SYSTEM



TECHNICAL SPECIFICATION:	OPTIONS:
Load Range:	1MN
Pressure Range:	70MPa
Sample Size:	50mm
Cell Size:	70mm
Optional Extras:	
Acoustic Velocity Transducers	50mm (Max load 400kN)

LARGE AUTOMATED DIRECT SHEAR SYSTEM



TECHNICAL SPECIFICATION:	OPTIONS:
Load Range:	100kN Axial, 100kN Shear
Max Speed:	0.1mm/s
Sample Size:	Max 150mm Circular
Optional Extras:	
Soil Sample Set	300 x 300mm Square 300mm Circular

BACK PRESSURE SHEARBOX (HIGH PRESSURE)



TECHNICAL SPECIFICATION:	OPTIONS:
Load Range:	100kN Axial, 75kN Shear
Pressure Range:	10MPa
Sample Size:	50 or 100mm (Circular) x 50mm high, 40mm Square x 40mm high

HYDRAULIC LOAD FRAMES

KEY FEATURES

Systems are configured to the customers' test specifications and budgets.

Stiff load frames to avoid backlash and spring effects.

Automated system control and data acquisition via GDSLAB software.

Load frames with electro-mechanical or hydraulic actuation available.



HLF100 TECHNICAL SPECIFICATION:	OPTIONS:
Load Range:	100kN
Pressure Range:	2, 4, 20MPa
Sample Size:	70, 100, 150mm
Optional Extras:	
Heating Only	Ambient to 60°C

HLF250 TECHNICAL SPECIFICATION:	OPTIONS:
Load Range:	250kN
Pressure Range:	1MPa
Sample Size:	300mm
Lifting Arrangement:	Included
Optional Extras:	
Sample Table Assembly	Available



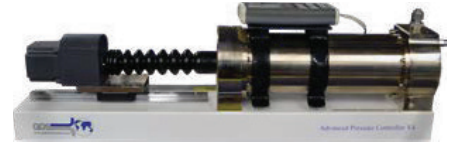
ENTERPRISE LEVEL PRESSURE VOLUME CONTROLLER ELDPC

General purpose water pressure source and volume change gauge. 1MPa pressure rating and 200cm³ volumetric capacity. Typically used in commercial testing, teaching applications and lower cost systems.



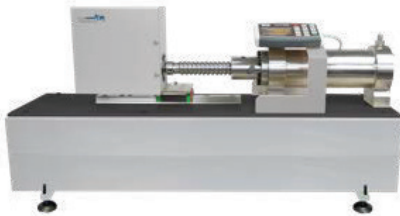
STANDARD PRESSURE VOLUME CONTROLLER STDDPC

Our mid-range water pressure source and volume change gauge. 1, 2, 3 & 4MPa pressure ratings available all with 200cm³ volumetric capacity. Can also use DigiRFM interface. Typically used in advanced commercial testing and research systems.



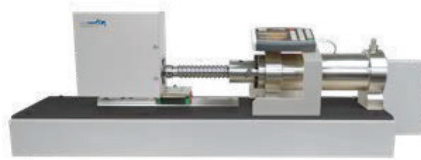
ADVANCED PRESSURE VOLUME CONTROLLER ADVDP

Advanced water pressure source and volume change gauge. 1, 2, 3, & 4MPa pressure ratings available in 200cm³ model or 1 & 2MPa available with 1000cm³ volumetric capacity. Compatible with DigiRFM interface. Typically used in research systems. (1000cc shown).



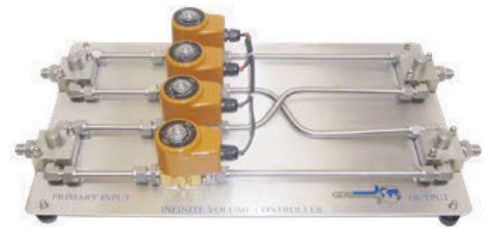
HIGH PRESSURE VOLUME CONTROLLER HPDPC

Advanced water pressure source and volume change gauge. 8, 10, 16, 20, 32, 64 & 70MPa ratings available with 200cm³ volumetric capacity. Compatible with DigiRFM interface. Typically used in offshore or rock mechanics applications.



HIGH PRESSURE / VOLUME CONTROLLER (CORROSIVE FLUID) HPDPC-H

Similar to the HPDPC but with upgraded materials for all wetted components. Typically used when unknown contaminants may be present or when actions of corrosive materials are being investigated. Made of Hastelloy, the controller is available in 32 or 64MPa pressure ratings.



INFINITE VOLUME CONTROLLER GDSIVC

Compatible with all GDS controllers up to 4MPa this automatic switching unit is used to provide seamless pressure or volumetric flow between an external reservoir and test station. Two similar controllers are used with this system. High pressure 64MPa version also available.



PNEUMATIC PRESSURE CONTROLLER (1MPa OR 2MPa) GDSPPC

An economical computer controlled air pressure regulator, available in 1MPa or 2MPa ranges and in single or dual output. This can be used from a compressor fed airline or compressed gas cylinder. Typically used in unsaturated testing and in low cost dynamic applications.



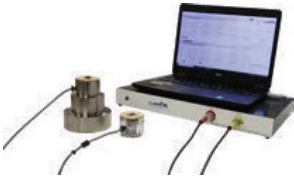
HIGH PRESSURE GASEOUS CONTROLLER DCHGP

This high pressure gaseous controller has a capacity up to 20MPa. This allows gases to be used in much higher pressure systems than in traditional systems. It is typically used where confining fluid viscosity is of importance such as in resonant column testing. Available in single or dual output.



DIGITAL REMOTE FEEDBACK MODULE DIGIRFM

DigiRFM's can provide an additional single channel of data acquisition. They can be added to standard and advanced controllers (not compatible with Enterprise) and GDS' range of load frames. The DigiRFM's can also be used to provide closed loop communication with GDS load cells and displacement transducers.



HORIZONTAL BENDER ELEMENTS

GDSBES-H

Enables measurement of the maximum shear modulus of soil. Can perform S- and P- wave testing with the same elements. Vertical and horizontally propagating elements available.



VERTICAL BENDER ELEMENTS

GDSBES-V

Use of horizontally propagating elements, in addition to axial elements, allows the user to quantify the degree of stiffness anisotropy present in the soil specimen.



ACOUSTIC VELOCITY

GDSAV

Systems to measure the P- and S- Wave velocities within a sample. AV sensors are generally used where pressures and load exceed those where bender elements can be used.



**LVDT LOCAL STRAIN TRANSDUCERS
LVDT**

Mounted locally on a specimen to measure small strain vertical and radial deformations. Working pressures of up to 3.5MPa or 100MPa version for use in non-conducting oil.



**HALL EFFECT LOCAL STRAIN TRANSDUCERS
GDSHE**

Mounted locally on a specimen to measure small strain vertical and radial deformations. Lightweight to minimise specimen disturbance. Working pressures up to 2MPa.



**MID PLANE PORE PRESSURE AND MID PLANE SUCTION PROBES
GDSM4P**

Provides direct measurement of the pore pressure or suction at the specimen mid-height. Available for 1.5 or 3.5MPa.



**ULTRA LOW RANGE WET-WET PRESSURE TRANSDUCER
ULR-WW**

Calibrated to directly measure specimen volume change during saturated and/or unsaturated soil testing. Requires use of HKUST internal cell. Range \pm 1kPa.



**INTERNAL SUBMERSIBLE LOAD CELL
GDSISLC**

Unique two part submersible load cells, designed for measuring compressive loads ranging from 0.5, 1, 2, 4, 5, 8, 10, 12, 16, 20, 25, 32, 40, 50 & 64kN. Unaffected by variations in confining pressure.



**EXTERNAL S-BEAM LOAD CELL
S-BEAM**

Mounted externally to provide measurements of force. Available in 1, 2, 4, 5, 10, 16, 25, 50, 64 or 100kN ranges.



FORCE ACTUATOR

GDSFA

General purpose loading system with continuous readout of force and displacement. 10kN, 25kN & 50kN options are available.



BENDER ELEMENT CORE HOLDER

GDSBCH

Facilitates an aligned measurement of S- and P- wave through an unconfined cylindrical soil specimen.



TOXIC INTERFACE

GDSTI

Provides a separation chamber with a free flowing bellows rolling diaphragm, to prevent toxic/contaminated fluids and vapours from entering the aluminium base of the cell or pressure/volume controller.

Our laboratory software package, GDSLAB, starts with a core application known as the kernel. The GDSLAB kernel allows for data acquisition from your hardware, but no test control. Simply add the appropriate module or modules to complete the test suite functionality you require.

START WITH OUR CORE GDSLAB KERNEL...



THEN ADD IN THE MODULES FOR YOUR SPECIFIC TASK:

TRIAXIAL TESTING

SHEAR TESTING

OEDOMETER LOGGING

HOLLOW CYLINDER

CONSOLIDATION

TRIAXIAL TESTING SOFTWARE MODULES

DATA ACQUISITION, LOGGING AND RETRIEVAL:

Provided free of charge with every GDSLAB kernel. Provides all data related functions but no test control.

SATURATION & CONSOLIDATION PROCEDURES:

Cell and back pressure control for saturation (stepped or ramp), consolidation and B-check tests.

STANDARD TRIAXIAL TESTING:

Constant rate of strain control for Unconsolidated Undrained (UU), Consolidated Undrained (CU) and Consolidated Drained (CD) shearing tests.

STRESS PATH CONTROLLED TESTS:

Independent linear control of p, q or s, t stress space with unlimited number of linked paths.

ADVANCED LOADING (USER DEFINED TEST SEQUENCES):

Independent user control over the axial (load, stress or strain), radial and back pressure axes with control options of constant value, ramp or quasi-static sinusoidal cyclic applied separately to each axis.

K-ZERO CONTROLLED CONSOLIDATION/SWELLING:

Maintains zero diameter change (K0 conditions) by two methods, either from a direct reading of the specimen diameter or using specimen volume change calculations.

TRIAXIAL PERMEABILITY EVALUATION:

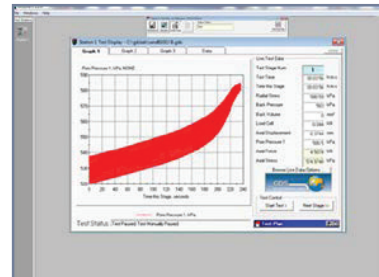
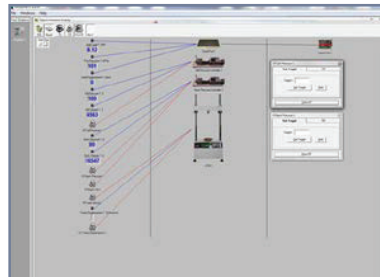
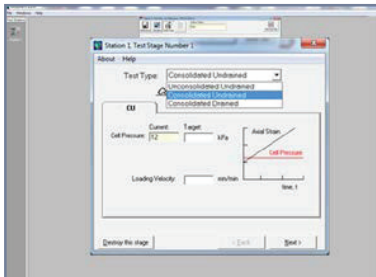
Controls either a constant head permeability test, or a constant flow permeability test with controlled hydraulic gradient control.

UNSATURATED TESTS USING AXIS TRANSLATION - 4D STRESS/STRAIN PATH:

Independent control of the axial axis (load, stress or strain), radial stress, pore water pressure and pore air pressure for complete flexibility of control for unsaturated triaxial tests.

DYNAMIC TRIAXIAL TESTS:

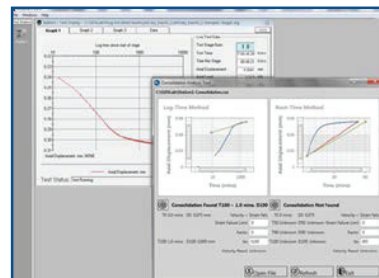
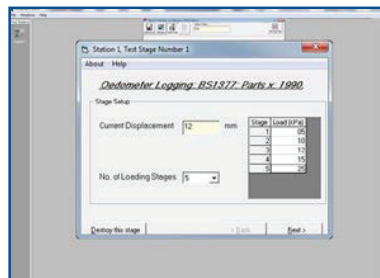
High speed dynamic cyclic triaxial testing with high speed data acquisition. Test control of dynamic axial load or axial displacement, with static cell and back pressure control. Dynamic control of axial stress and/or radial stress is available dependant on hardware.



OEDOMETER LOGGING MODULE

HANGING WEIGHT SYSTEM (OEDOMETER LOGGING):

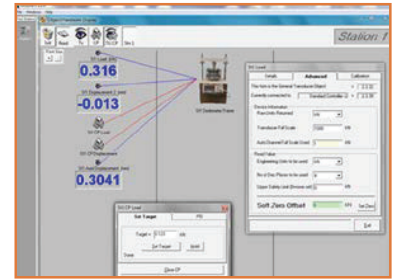
Uses a datalogger and displacement transducer to take settlement readings from hanging weight oedometer frames.



CONSOLIDATION SOFTWARE MODULE

STANDARD CONSOLIDATION PROCEDURES:

This test module allows the user to perform; B-check, saturation, constant stress, traditional stepped loading test, constant rate of strain and constant rate of loading tests. Versions of our consolidation cells that allow unsaturated tests to be performed using the axis translation technique are available.



SHEAR TESTING SOFTWARE MODULES

DIRECT SHEAR BOX CONTROL:

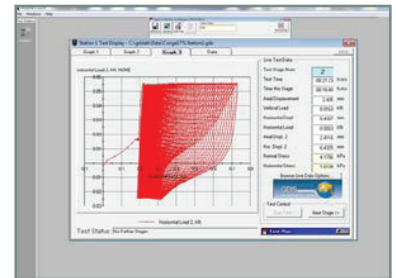
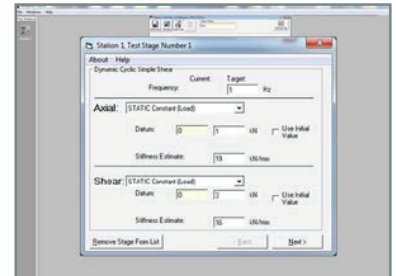
Generally used with direct shear or ring shear devices. Provides acquisition only or control where hardware permits for linear or linear cyclic reversal of a shear box or a ring shear machine. Ideal for upgrading manually logged equipment.

ADVANCED DIRECT AND DIRECT SIMPLE SHEAR MODULE:

Independent control over the axial axis (load, stress or strain) and shear axis (load, stress or strain) with constant, ramp or quasi-static sinusoidal cyclic control on either axis. Unsaturated tests may be performed using the axis translation technique.

DYNAMIC SIMPLE SHEAR:

High speed dynamic cyclic simple shear testing with high speed acquisition. Test control of dynamic axial and shear axes under load or displacement. Allows modulus, damping and liquefaction studies to be carried out.



HOLLOW CYLINDER SOFTWARE MODULES

HCA GENERALISED STRESS PATH:

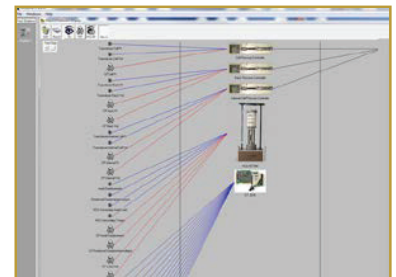
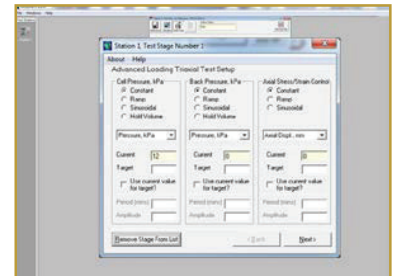
Provides independent linear control of p, q, b and alpha under stress or strain control. This module provides the fundamental HCA stress path control functions that test specifications demand, with unlimited number of linked paths.

ADVANCED HCA LOADING PROCEDURES:

Allows quasi-static independent control of the five axes; Axial (load, stress, strain, deformation), Rotational (torque, rotation), Outer Cell pressure (kPa), Inner Cell pressure (kPa) and Back pressure (kPa) using either constant, ramp or slow speed sinusoidal control.

DYNAMIC HCA LOADING:

High speed dynamic cyclic testing with high speed data acquisition. Test control of dynamic axial load or axial displacement, and dynamic control of torque or rotation. Optional dynamic control of inner and outer cell pressures depending on system specification.



GDS PRODUCT
SPECIFIC SOFTWARE

BENDER ELEMENT SOFTWARE

RESILIENT MODULUS
SOFTWARE MODULE

RESONANT COLUMN
SOFTWARE MODULE

GDSLAB REPORTS

Hoskin Scientific Limited has been supplying testing and monitoring instruments since 1946. Although our range is broad, we focus on three major markets including:

Geotechnical & Materials Testing
Environmental Monitoring
Test & Measurement Instrumentation



HOSKIN
SCIENTIFIC

Hoskin Scientific operates out of four offices within Canada:

Western Canada

3735 Myrtle Street
Burnaby, BC V5C 4E7
T: (604) 872-7894
F: (604) 872-0281
salesv@hoskin.ca

Ontario & Atlantic Canada Québec

#5-3280 South Service Rd, W
Oakville, ON L6L 0B1
T: (905) 333-5510
F: (905) 333-4976
salesb@hoskin.ca

300 Rue Stinson
Montréal, QC H4N 2E7
T: (514) 735-5267
F: (514) 735-3454
salesm@hoskin.ca

Edmonton Service Centre

11540 184 St NW
Edmonton, AB T5S 2W7
T: (780) 434-2645
edmontonservice@hoskin.ca



hoskin.ca

Supplying Testing & Monitoring Instruments Since 1946