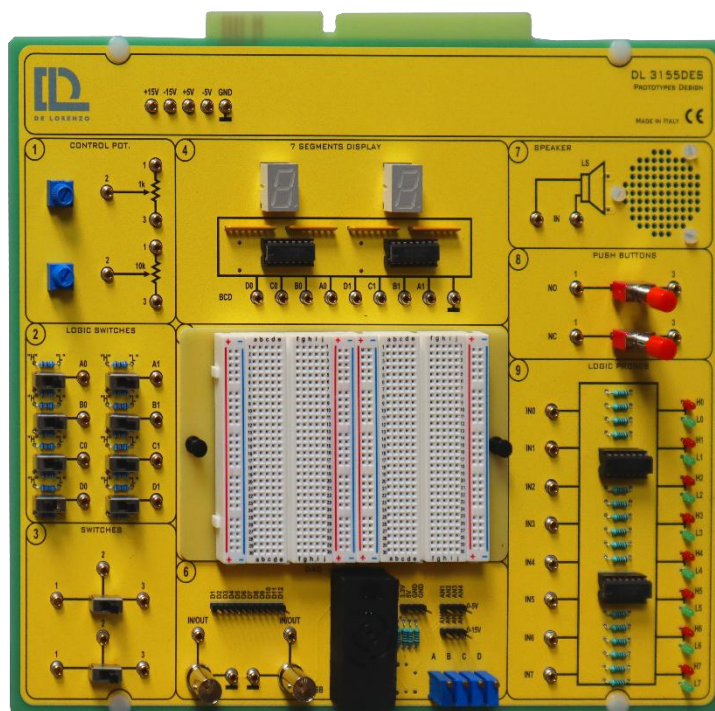




TIME ELECTRONIC BOARDS



BOARD FOR ELECTRONIC DESIGN DL 3155DES



The design and construction of electronic circuits to solve practical problems is an essential technique in the fields of electronic engineering and computer engineering.

It contains all the necessary elements for the student to carry out the design and wiring of his own electronic circuits, both analogue and digital.

GENERAL SPECIFICATIONS

- Interfaceable with DL 3155AL3 base system
- Interfaceable with PC with USB port
- Supplied with software
- Dimensions of the module: 297x260mm.
- Supplied with connecting cables

CIRCUIT BLOCKS

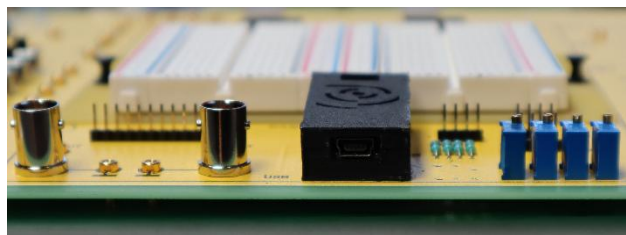
- Removable breadboard
- 8 red logic indicators for high levels and 8 green logic indicators for low levels
- 2 pushbuttons with normally open and normally closed outputs
- 1 Potentiometer - 1 k Ω
- 1 Potentiometer - 10 k Ω
- 2 slide switches with free terminals
- 2 BNC Connectors
- 8 logical switches
- 1 loudspeaker, 8 Ω / 0.5W
- 2 7-segments LCD displays with decoder
- Interface for PC



TIME ELECTRONIC BOARDS

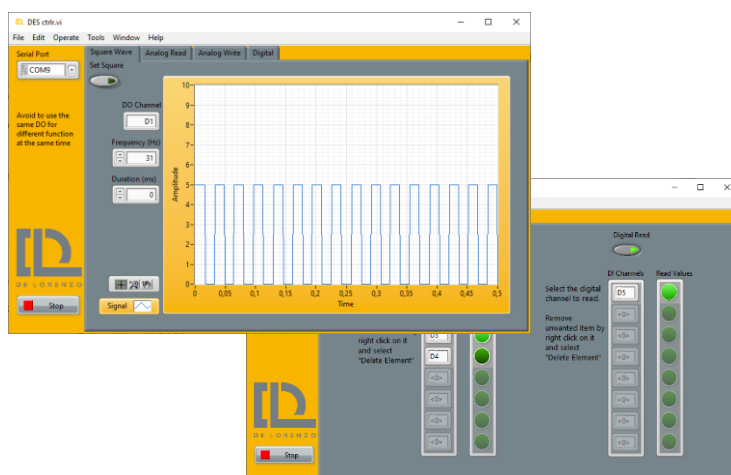


On-board Arduino with PC connectivity through USB



The software supplied includes:

- Square wave generator
 - Range: 31Hz to 10kHz
- Analogue Signal read
- PWM signal generator
- Digital state analyzer



Interface with DL 3155AL3 base system (sold separately)

- Includes all necessary power supplies
- Powerful virtual instrumentation.
- Robust structure and modern design.
- Voltage regulation and protection against over voltage or short circuit.

